

UNIQUE SELLING POINT (USP) OF NAPH MACHINES



Naph Graphics Pvt. Ltd.

***Our Quality.
Our Commitment.***



- NAPH is a strong team of qualified engineers with a rich experience of the printing industry spanning over 20 years. We build presses to meet precise requirements and attachments that suit existing presses of any make. A wide range of already built and operative machines are a testimonial to this.
- We are always aspiring for the customer satisfaction and perfection. Naph is an established brand which has shown its innovation and up gradation capability time to time. Naph machines are time proven web offset presses for printing of Newspapers, Periodicals and Text Books with Quality. Naph machines are designed according to most advanced standards of engineering, combining optimum reliability and long service life.

Why Us ??



- Exclusiveness for Contentment
- Inimitable design with Matchless Perfection
- Easy to Upgrade
- Constant endeavor to Upgrade
- Consistency in Quality, Development and Advancement
- Low Maintenance Cost
- Latest Print Technology
- Unmatched Support Turnaround

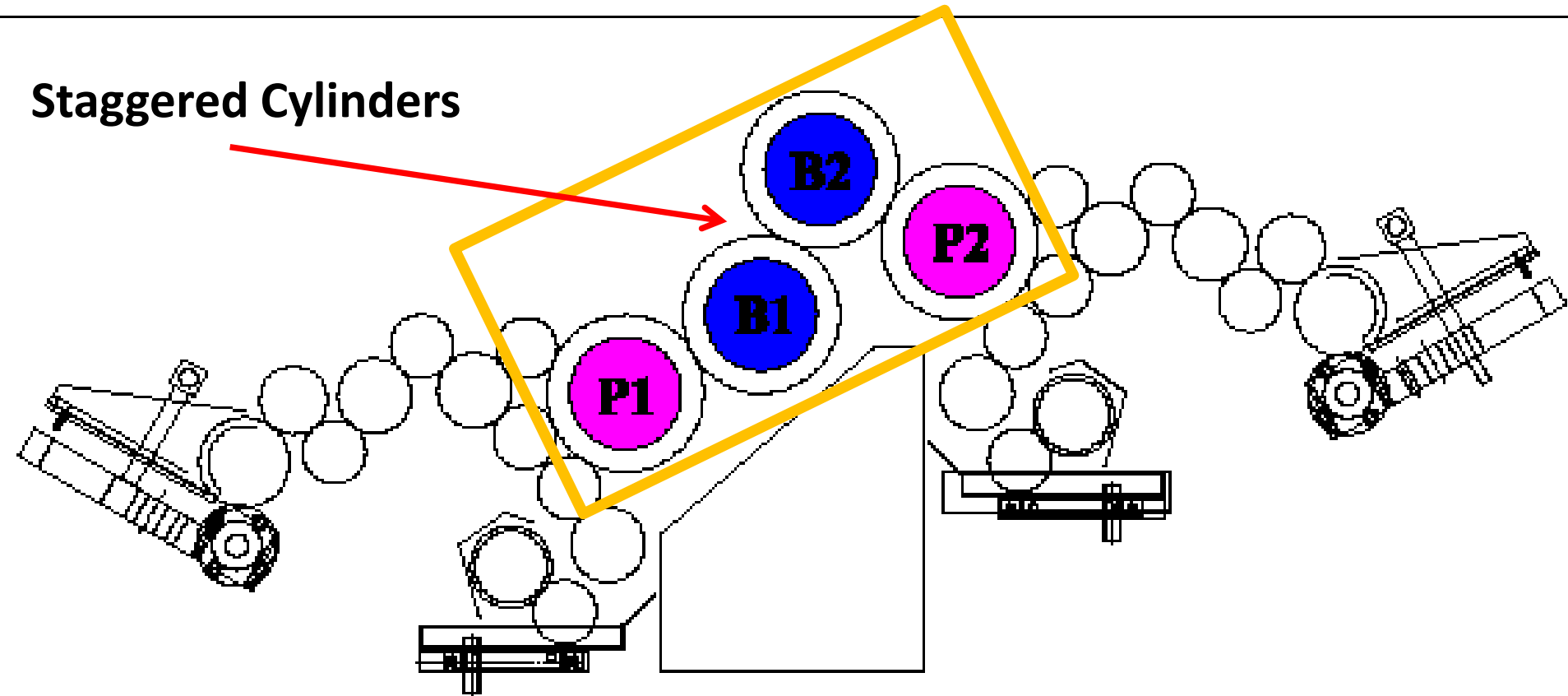


**Some Unique Selling Proposition
(USP)
of
Naph Machines**

Staggered Blanket Cylinder

Continuous Firm Grip of the Web
Optimum Color Registration Stability

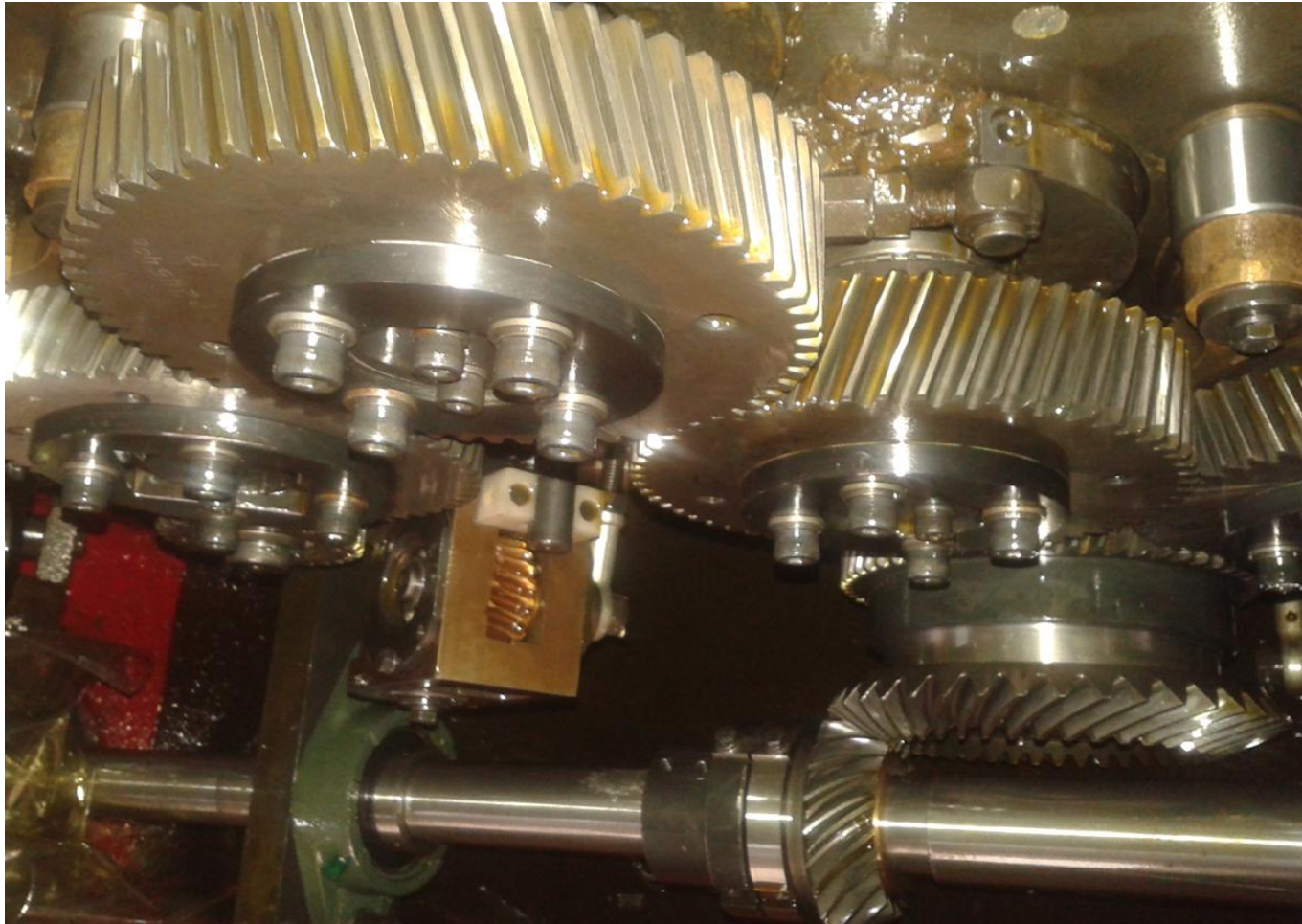
Staggered Cylinders



Helical Gears



All Plate and Blanket cylinders rolls with Hardened Ground Helical Gears for Better Power Transmission



Two Frame Tower



Generally a Tower consists of 4 Stack units where as in NAPH – KONCEPT Tower, One Frame constitute Two stacks. This makes Tower more sturdy and results in much more accuracy in machining

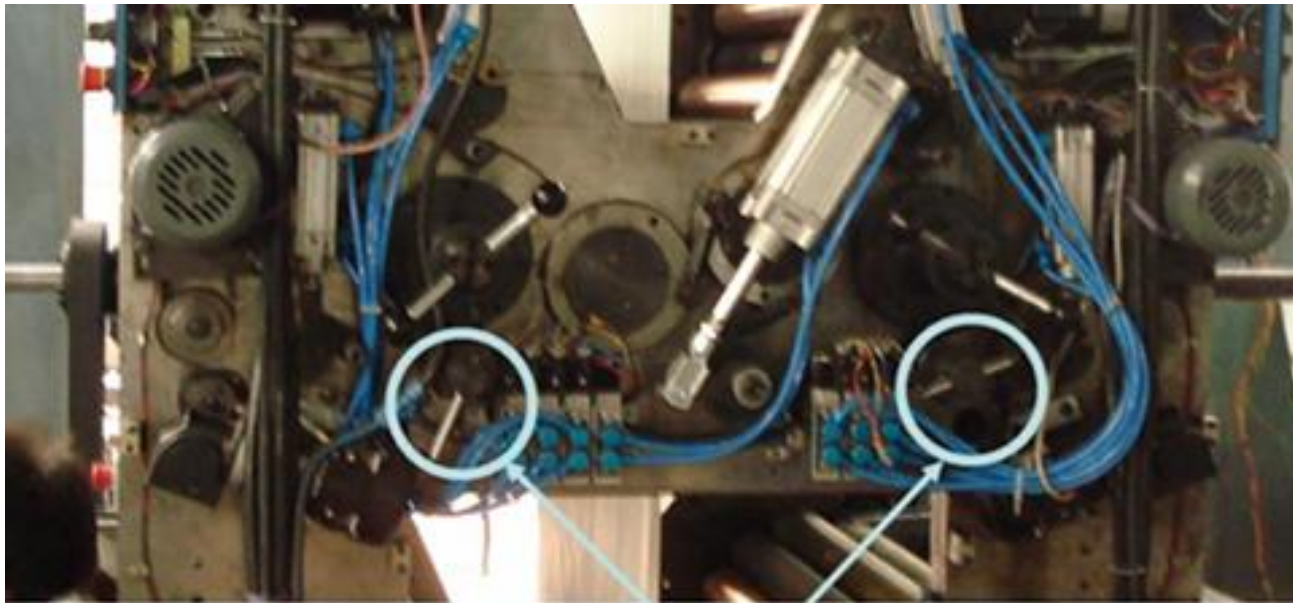


Circumferential (RCR) Adjustment

On all 8 Plate Cylinders

On the Operator Side

Quick & Easy to achieve Color Registration



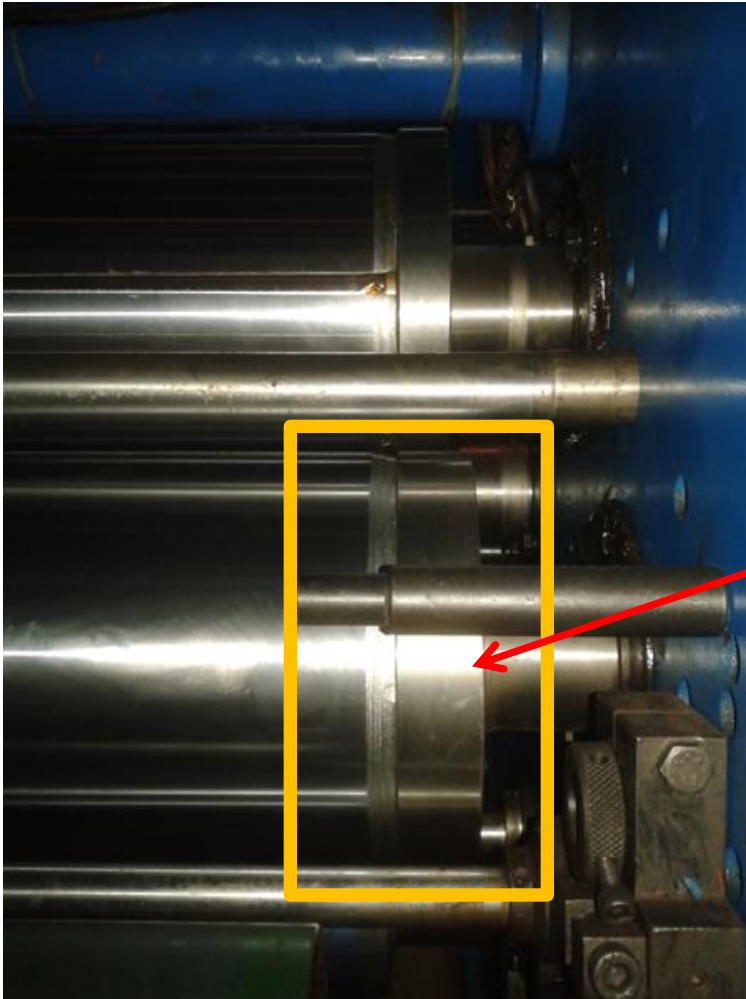
RCR CONTROLS

- ON ALL PLATE CYLINERS
- ON OPERATOR SIDE

Hardened Ground Bearers



Additional aid for TRUE ROLLING of printing cylinders for better Dot transfer and also for Easy & Accurate Impression Settings

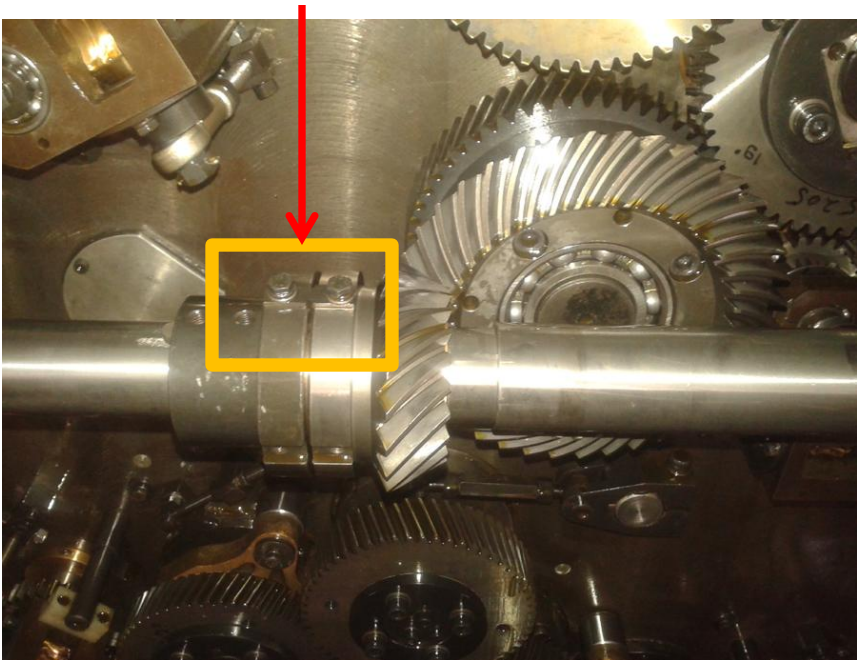


Hardened Ground Bearers

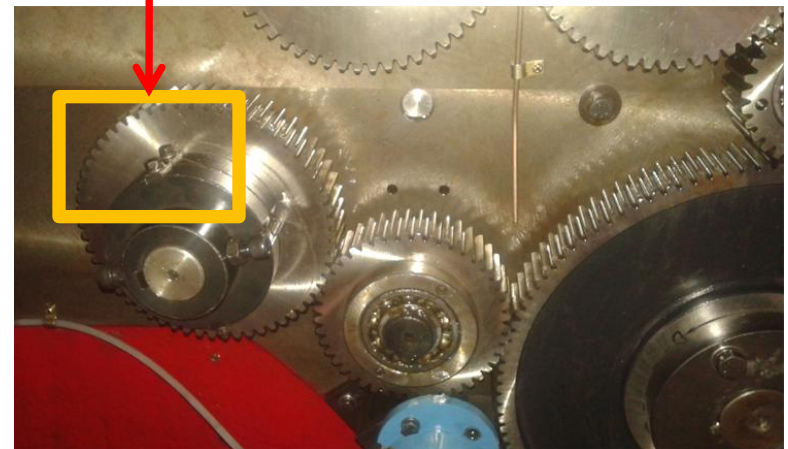
Overload Safety Keys

Over Load Shear Keys Provided on each and every drive shaft to avoid Major Damage to the Mechanical Components of the machine

Overload Safety Keys in Printing Unit



Overload Safety Keys in Folder



Heavy Duty Jaw Type Three Cylinder Folder



Based on 2:2:1 Principle



DOUBLE
DIA FOLDING & JAW DRUM

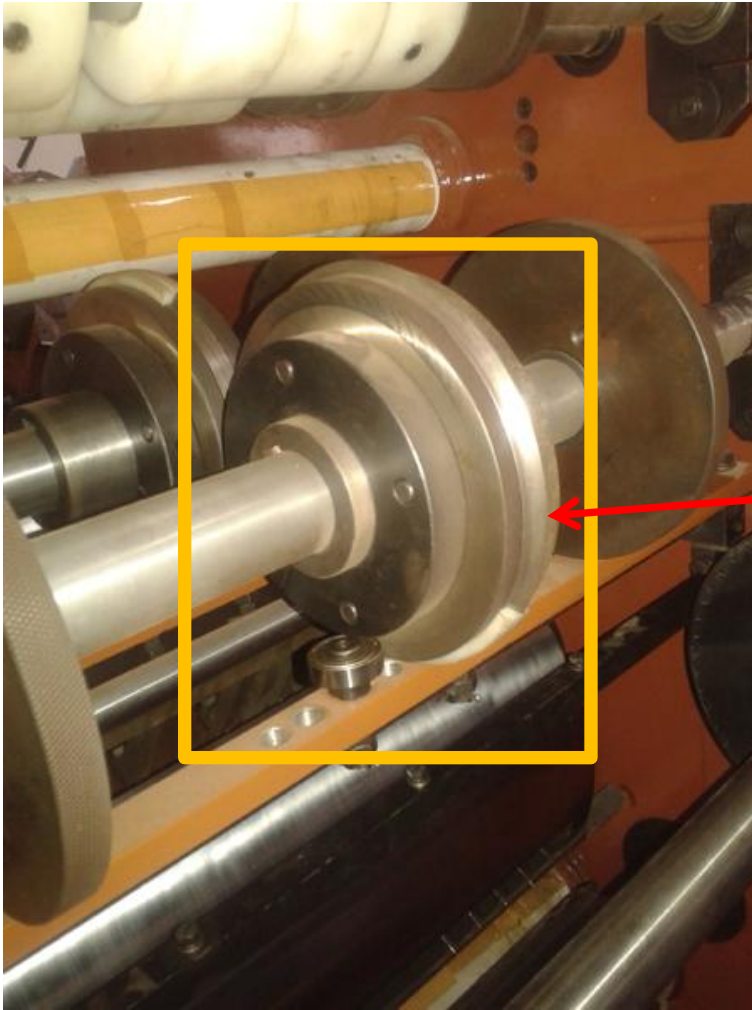
SINGLE DIA
CUTTING CYLINDER

1 : 2 : 2 CONFIGURATION

High Speed Quarter Folder



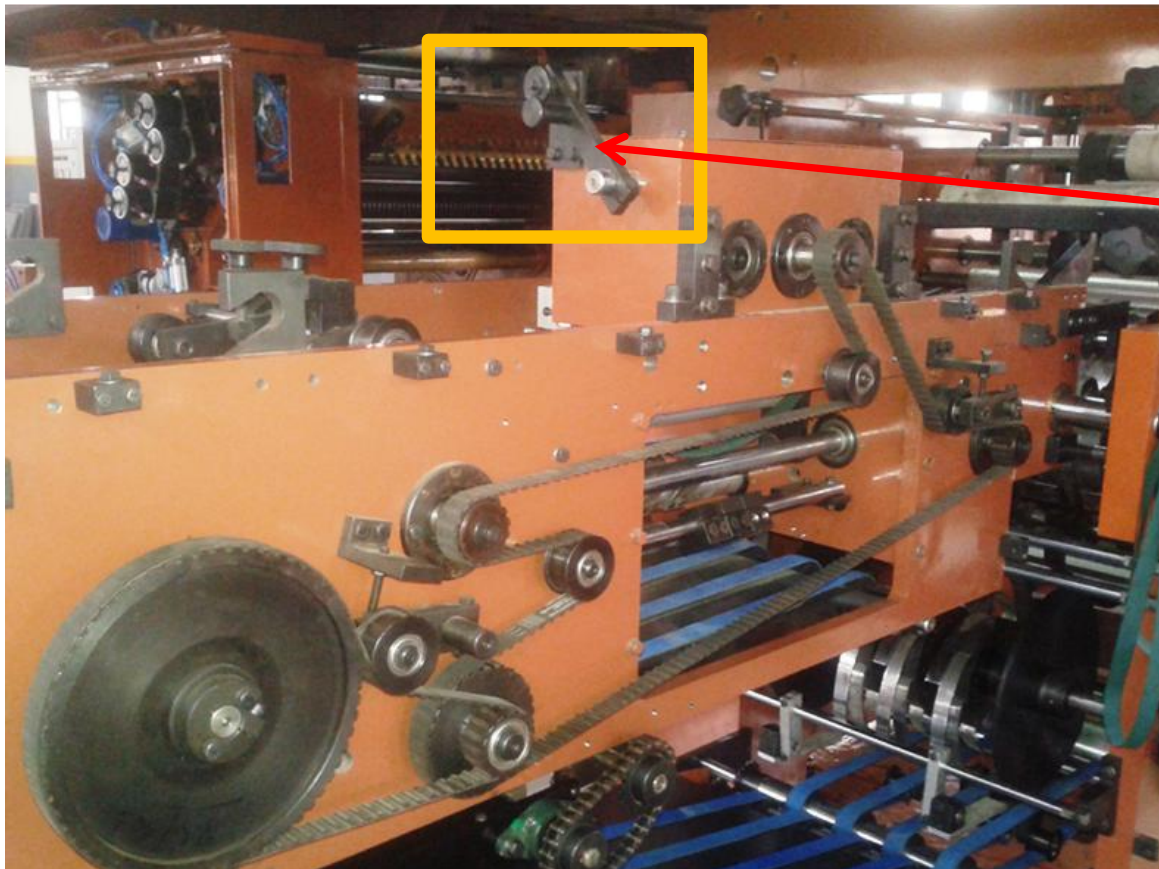
On Line Male - Female creasing in Folder for Perfection of Quarter Fold even at high speed



Male – Female Creasing

Single Clutch Quarter Folder On-Off

Single Clutch Engage – Disengage make it possible to change over from Half Fold Jobs to Quarter Folded Jobs and from Quarter Folder Jobs to Half Fold Quicker. It takes hardly Few Seconds to Engage Or Disengage Quarter Folder



Engage – Disengage
Clutch

Naph Graphics Pvt. Ltd.



Works:

Unit 1:

D-93, Sector-63,
Noida-201307,
U.P., India
Ph: +91-120-2401320, Fax: +91-
2403095

Unit 2:

Plot No. 105, Toy City, Ecotech – III,
Greater Noida-201308,
U.P., India

Registered Office:

U-44A, Shakar Pur, Delhi-110092, India

Mobile: +91 98114 44928, +91 9999767656

Email: naphgraphics@yahoo.co.in
info@naphgraphic.com
sales@naphgraphic.com
86mbansal@gmail.com

www.naphgraphic.com

www.naphgraphic.com



Thank You