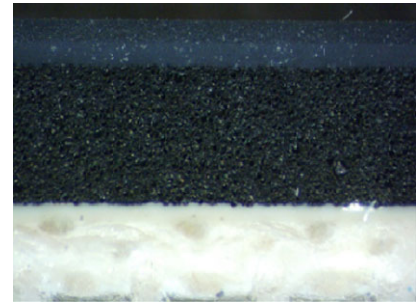


BöttcherTop 4x4 microflute

developed specifically for direct offset printing on micro-flute board

- | | |
|--------------------|--|
| → Presses | Sheet-fed |
| → Packing height | Use same packing material thickness than for 1.95mm blankets |
| → Substrates | Micro-flute board |
| → Inks | Most types (incl. UV and hybrid) |
| → Wash-up solvents | Most types (incl. UV and hybrid) |



Application

- | | | | |
|--|--|--|--|
| → Two-ply construction and specific thickness (2.07mm) offering room for reinforced compressible layer | <ul style="list-style-type: none"> • Optimum ink transfer in the « valleys » of micro-flute board • No board structure show-through in the printed image • Does not affect the stability of micro-flute board • Instant recovery after every nip • Excellent resistance to excess-pressure • Protects the printing press and compensates for mechanical shortcomings such as cylinder bounce, press specific vibrations and press wear | | |
| | → No fabric between printing surface and compressible layer | <ul style="list-style-type: none"> • Enhanced surface flexibility, optimum ink transfer in the « valleys » of micro-flute board • Instant recovery after every nip | |
| | → Micro-ground and polished printing surface, controlled roughness (Ra: 0.5 – 0.8 µm) | <ul style="list-style-type: none"> • Sharp and well-defined dots • Prompt and easy to clean | |
| | → Soft surface rubber designed for mixed-mode /hybrid applications | <ul style="list-style-type: none"> • Controlled swelling in mixed-mode/hybrid applications (conventional and UV inks and washes) • Excellent coverage of micro-flute board with ink • Full dots, dense and well-spread solids | |
| | | → Stable carcass manufactured from pre-stretched calendered fabrics | <ul style="list-style-type: none"> • Minimum residual elongation, controlled gauge loss • High dimensional stability, also on big format sheet-fed presses |

Features / Benefits





Construction

Fabric plies	2
Compressible layer	Closed cell
Identification lines	None

Surface

Colour:	Black
Finish:	Ground and polished
Roughness (Ra):	0.5 – 0.8 µm
Micro-hardness:	60° Shore A

Physical Properties

Overall hardness:	65° Shore A
Tensile strength:	> 3500N/50 mm
Elongation at 500N/50 mm:	< 1,5 %
Gauge loss at tensioning and running in:	< 2 %
Indentation at 100N/cm ²	0.42mm (20.3%)
Indentation at 200N/cm ²	0.55mm (26.6%)

Gauge

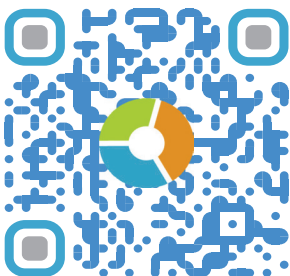
Nominal gauge	2.07mm (+/-0.02mm)
Gauge uniformity per blanket of max. 1 m ² :	+/- 0.015 mm

All our product information sheets you will find on the internet www.boettcher-systems.com. Take advantage of our homepage and learn more about our products and services.

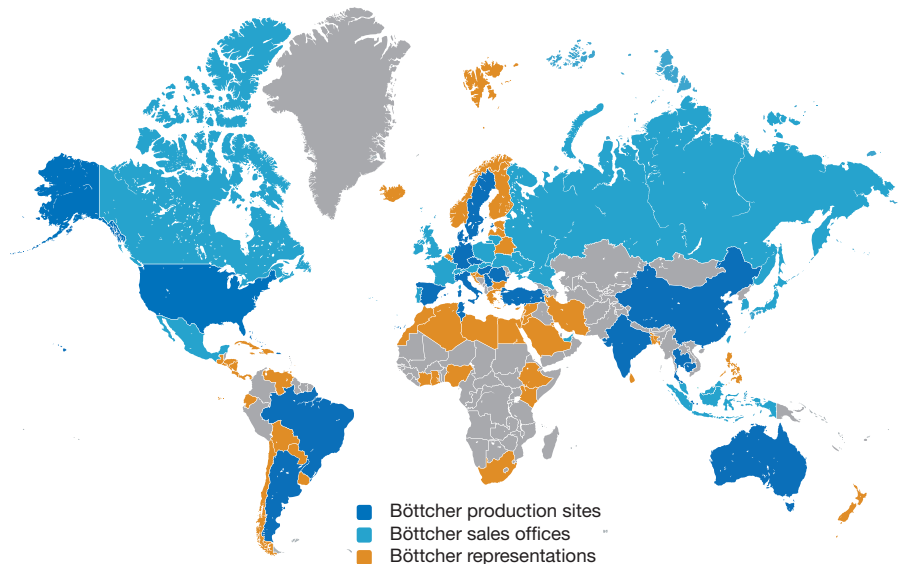
Felix Böttcher GmbH & Co. KG

Headquarter

Stolberger Str. 351 - 353
50933 Cologne / Germany
Phone 0221 4907 - 1
Fax 0221 4907 - 435
koeln@boettcher-systems.com



www.boettcher.de/contact



The purpose of these technical data is to assist our customers. We list general experience and laboratory test. Translation of these to actual applications is, however, subject to a variety of factors which are beyond our control. We ask for understanding that claims can not be based upon them.