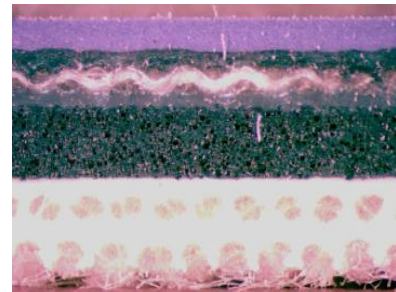


BöttcherTop 4K-UV

designed for high definition printing in an UV environment,
open (paper & carton) and closed (metal/plastics)
substrates

- | | |
|--------------------|--------------------------------|
| → Presses | Sheet-fed |
| → Packing height | Conform to OEM recommendations |
| → Substrates | Carton, Metal, Paper, Plastics |
| → Inks | UV |
| → Wash-up solvents | UV |
| → Fount solutions | IPA and alcohol substitutes |



Application

- | | |
|---|--|
| → Original EPDM surface compound | <ul style="list-style-type: none"> ⚡ Exceptional swell resistance to polar components found in UV inks and UV cleaning fluids ⚡ Reduced sensitivity to UV-lamps ⚡ High resistance to retain images and ghosting from previous jobs |
| → Micro-ground and polished printing surface, controlled roughness (Ra: 0.7 - 1.0 µm) | <ul style="list-style-type: none"> ⚡ Sharp and well defined dots ⚡ Full dots, dense and well-spread solids ⚡ Handles a wide range of substrates (Paper, carton, metal, plastics) ⚡ Excellent release of the printed substrate (Quick Release) ⚡ Controlled ink piling outside sheet size and picture framing |
| → 3-ply construction offering thicker than standard compressible layer | <ul style="list-style-type: none"> ⚡ Excellent resistance to excess-pressure (double/folded sheets, format changes/edge cuts, piling, etc) ⚡ Low tendency for heat-built-up (great stability of the ink/water balance) ⚡ Compensates for mechanical shortcomings such as cylinder bounce (streaks), press specific vibrations and press wear ⚡ Handles uneven substrates with ease |
| → Stable carcass manufactured from pre-stretched calendered fabrics | <ul style="list-style-type: none"> ⚡ Minimum residual elongation, controlled gauge loss ⚡ No doubling and slurring ⚡ High dimensional stability, also on big format sheet-fed presses |

Features / Benefits



Construction

Fabric plies	3
Compressible layer	Closed cell
Identification lines	None

Surface

Colour:	Purple
Finish:	Ground and polished
Roughness (Ra):	0.7 – 1.0 µm
Micro-hardness:	60° Shore A

Physical Properties

Overall hardness:	77° Shore A
Tensile strength:	> 4500N/50 mm
Elongation at 500N/50 mm:	< 1,5 %
Gauge loss at tensioning and running in:	< 2 %
Indentation at 100N/cm²	0.13mm (6.6%)
Indentation at 200N/cm²	0.21mm (10.7%)

Gauge

Nominal gauge	1.96mm (+/-0.02mm)
---------------	--------------------

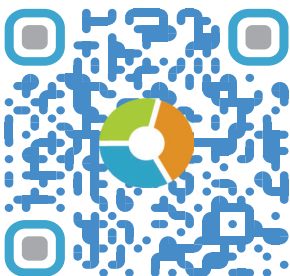
Gauge uniformity per blanket of max. 1 m²:	+/- 0.015 mm
--	--------------

All our product information sheets you will find on the internet www.boettcher-systems.com. Take advantage of our homepage and learn more about our products and services.

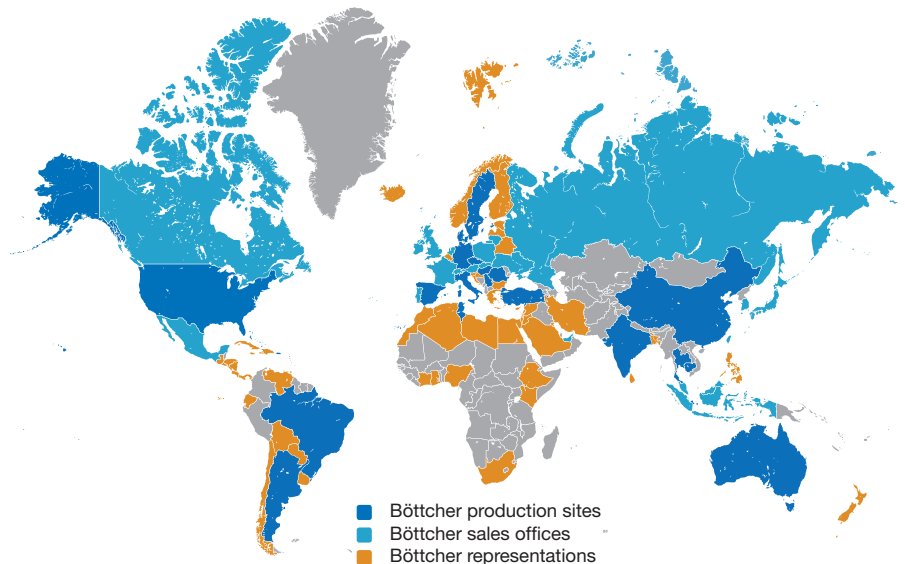
Felix Böttcher GmbH & Co. KG

Headquarter

Stolberger Str. 351 - 353
50933 Cologne / Germany
Phone 0221 4907 - 1
Fax 0221 4907 - 435
koeln@boettcher-systems.com



www.boettcher.de/contact



The purpose of these technical data is to assist our customers. We list general experience and laboratory test. Translation of these to actual applications is, however, subject to a variety of factors which are beyond our control. We ask for understanding that claims can not be based upon them.