



KONICA MINOLTA

# FACTS & FIGURES

## Bridging the gap between offset & digital with AccurioJet KM-1e presses

**INSTALLATIONS TRIPLED WITHIN A YEAR!**  
Konica Minolta almost tripled the number of KM-1(e) installations in the European market in FY 2019 (Apr '19 – Mar '20) compared to FY 2018 (Apr '18 – Mar '19)

The things they say...

“Print quality is better than offset. One of the added benefits is that wastage is kept to a minimum”

Arndt Eschenlohr, former President of PLS Print Logistic Services GmbH in Germany

“As the market continues to evolve with the increase of shorter-run length jobs we are transferring these from litho to the AccurioJet KM-1. This will enable us to capitalise on the machine’s ability to match offset quality and have quicker job turnarounds, greater efficiency and substantial cost-savings”

Andrzej Nowak, R & D Manager at Chroma in Poland



Key reasons why inkjet printing is fastest-growing print segment:

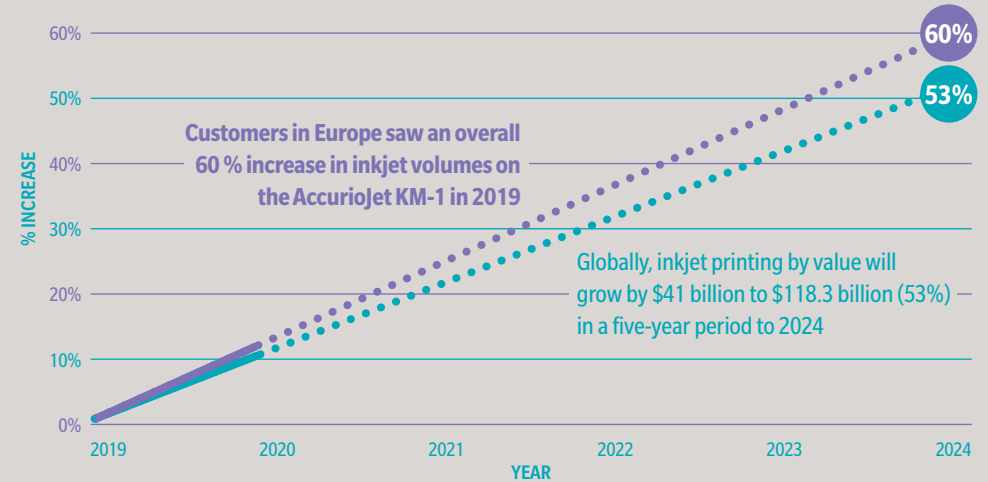
- Development of **scalable, robust, single-pass inkjet technology**
- It’s become a **preferred choice** for many high-value applications
- **Higher productivity** and lower TCO open doors for inkjet printing in growing addressable markets

## ADVANTAGES OF AccurioJet KM-1e

- Outstanding print quality as good as litho
- Minimal wastage, downtime and maintenance
- Reduced downtime and maintenance
- Printing on wide range of substrates – both coated and uncoated
- Bigger B2 format size



## INKJET PRINTING DRIVING CHANGE



## AccurioJet KM-1e - WHAT YOU ALSO NEED TO KNOW:

- **Enhanced colour stability** and consistency comes through patented **Dot Freeze Technology™**. Perfected prints are instantly dry
- The machine enabled Konica Minolta to become the **world’s first press manufacturer to achieve prestigious FOGRA53 profile certification**
- EDP awarded the AccurioJet KM-1e “**Best cutsheet color B2+ printer**”

\* The Future of Digital vs Offset Printing to 2024, Smithers; and Konica Minolta-own research among European AccurioJet KM-1 customers