

TOSHEN[®]

We Are
The_{rmal} Expert

1. . . . About Us
2. . . . Company Overview
3. . . . BOPP Thermal Lamination Film
4. . . . PET Thermal Lamination Film
5. . . . Soft Touch Thermal Lamination Film
6. . . . Anti-Scratch Thermal Lamination Film
7. . . . Digital Print Thermal Lamination Film
8. . . . Operation Instructions
9. . . . Contact Us

1. . . About Us

Name: Yangzhou ZhongHe TongSheng
Packing Material Co., Ltd

Location: Jiangdu District, Yangzhou City
Jiangsu Province, East Costal of China

History: Since 2007

Product: Thermal Lamination Film

Process: Extrusion Laminating, Slitting, Corona Treating

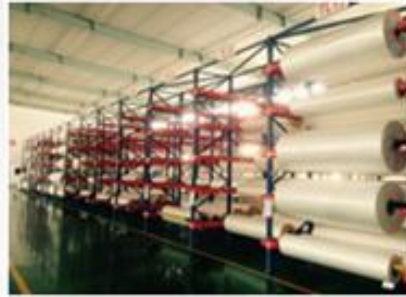
Capacity: 10000 tons / year

TOSHEN[®]



2. . . Company Overview

TOSHEN[®]



3. . . BOPP Thermal Lamination Film

Key Features:

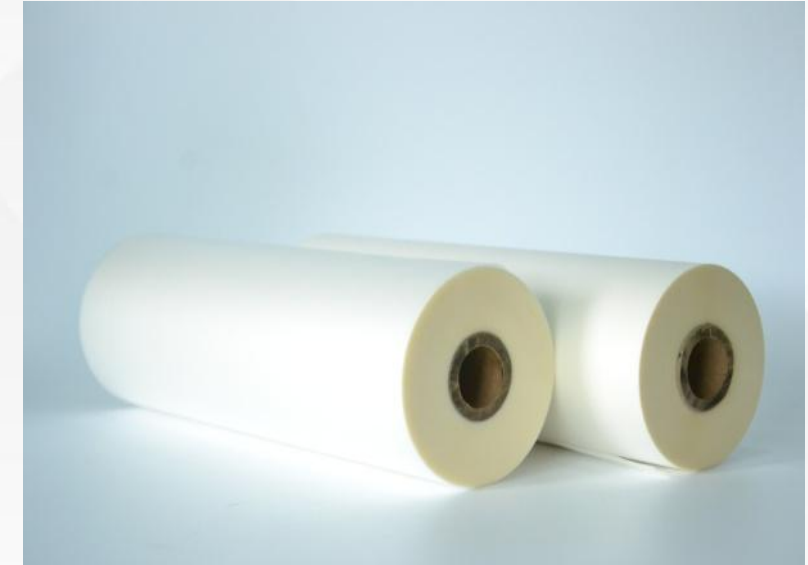
BOPP Thermal Lamination Film is an environmental material which enhances the finished item's value through high transparency and super luster finish.

It could prevent lamination from being pressed, bubbled and desquamated.

Bopp Thermal Lamination could also protect from harmful substances and water proof, ensuring a long life storage for the printings.

Applications:

Textbook covers, brochures, leaflets, sweet boxes, cosmetics, shopping bags, diaries, etc.



Material: BOPP+EVA

Thickness: 18mic. ~ 40mic.

Width: 200mm ~ 1800

Length: 150m ~ 4000m

Core: 1"(25.4mm) / 2½"(58mm) / 3"(76mm)

Compound temperature: 85~110°C (185~230 °F)

Compound pressure: 5~15 Mpa

Compound speed: 8~40 m/min



4. . . PET Thermal Lamination Film

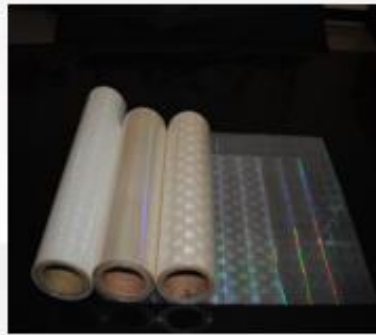
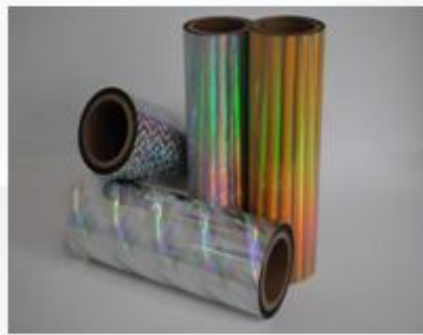
Key Features:

PET film is known with advantages of Moderate amount of glue , good adhesion, wide range of application, high gloss and super transparency.



Applications:

ID card, cultural and historical documents, photo, credit card, license, representative card, etc.



Material: PET+EVA

Thickness: 20mic. ~ 300mic.

Width: 200mm ~ 1800

Length: 150m ~ 4000m

Core: 1"(25.4mm) / 2½"(58mm) / 3"(76mm)

Compound temperature: 95~120 °C

Compound pressure: 8~18 Mpa

Compound speed: 8~40 m/min

5. . . Soft Touch Thermal Lamination Film

TOSHEN®

Key Features:

Exceptional velvet sense/ Soft touch/ Silk feeling/ Velvet feeling, Soft touch, Silk feeling

High performance of rub resistance and matt effect.

Outstanding luster even after laminating, it is softer with black and red color or with dark on full plate.

Special feeling of smooth velvet and silk touch, giving you the unprecedented luxury.



Applications:

High-end book covers, packing prototypes, corporate brochures, etc.

Material: BOPP+EVA

Thickness: 30 mic.

Width: 200mm ~ 1800

Length: 150m ~ 2000m

Core: 1"(25.4mm) / 3"(76mm)

Compound temperature: 95~120 °C

Compound pressure: 15 Mpa

Compound speed: 8~40 m/min

6. . . Anti-Scratch Thermal Lamination Film

TOSHEN®

Key Features:

Anti-scratch Thermal Laminating Film is one of the latest innovation laminating films we are producing. As the name calls, it is scratch resistant as a consequence of special chemical treatment onto the base film of BOPP. This film is extrusion-coated with EVA by one side, giving support to be laminated through heat.

Scratch resistant / Comfortable touch / Good for UV inks and hot stamping
Designed for high quality graphic media
For luxury packaging
Enhance outstanding effect, distinguished from other prints

Applications:

High-end book covers, packaging prototypes, corporate brochures, product branding



Material: BOPP+EVA

Thickness: 28 mic.

Width: 200mm ~ 1800

Length: 150m ~ 2000m

Core: 1"(25.4mm) / 3"(76mm)

Compound temperature: 95~120 °C

Compound pressure: 15 Mpa

Compound speed: 8~40 m/min

7. . . Digital Print Thermal Lamination Film

Key Features:

Specially designed for digital print. Super bonding. Suitable for various paper and ink, even for the lamination of powder paper. It can well apply to UV glazing and hot-stamping after the corona treatment on the surface.

ONCE LAMINATED, NO WAY TO TEAR OFF

Applications:

Especially for laminating digital printed materials which is of silicone oil base and other materials which require sticking adhesion effect. This film is suitable to be used in materials utilizing digital printing machines such as Xerox , hp ,Kodak, Canon, Konica Minolta, Founder and others.



Material: BOPP+EVA

Thickness: 30 mic.

Width: 200mm ~ 1800

Length: 150m ~ 2000m

Core: 1"(25.4mm) / 3"(76mm)

Compound temperature: 75~90°C

Compound pressure: 10 ~ 20 Mpa

Compound speed: 8~30 m/min

Films

Color sit amet,
or adipiscing.

8. . . Operation Instructions

1. Adjust roller pressure and temperature according to different types of paper and ink.
2. When using the film for the first time or changing the usual size, a small trial volume before starting massive lamination is proposed.
3. Normal process temperature is 90C-105C (203F - 221F), roller pressure and temperature vary from different types of paper, ink and machines.
4. Make sure the ink is dry before laminating. It will delaminate when the paper contains too much moisture or powder.
5. Make sure to put the material in place with low temperature and dry.
6. The following situation will affect the final quality of the film during lamination.

Using metal ink

Ink containing too much wax, dried oil, adhesive, silicon additive, etc.

Too much humidity with paper sheet

Too much dust remaining on lamination surface



9. . . Contact US

TOSHEN®

Add: No.6 Zhengchang Road Zhanggang Industrial Park,
Jiangdu, Jiangsu Province China

Tel: +86 514 86892963

Fax: +86 514 86892965

Email: york.day@toshenfilm.com

Mobile: +86 13813162941



TOSHEN[®]

THANK YOU