

WQM-320G/420 Label Logo Die Cutting Machine



Description

It adopts micro-computer control for accurate flatten die cutting, material feeding, and sheeting, with 3 points photocells for web-guiding and tracking.

Die cutting, waste collecting and finished-material sheeting or rewinding are on one process.

The machine could be used for die cutting adhesive paper, dacron label and laser hologram label.

It is the ideal auxiliary equipment of flexo printing machine, silk screen printing machine, gravure printing machine and hologram mark printing machine, and the most efficient unit for printing house.

Features

- a) Servo Motors are equipped for accurate material transmission.
- b) Touch Screen for convenient operation
- c) Frequency Converter used for speed regulation
- d) 3 pcs of Photocells are used for web guiding and print mark tracking
- e) Lamination shaft, sheeter device, rewinder are equipped for multi purpose.

Optional Parts

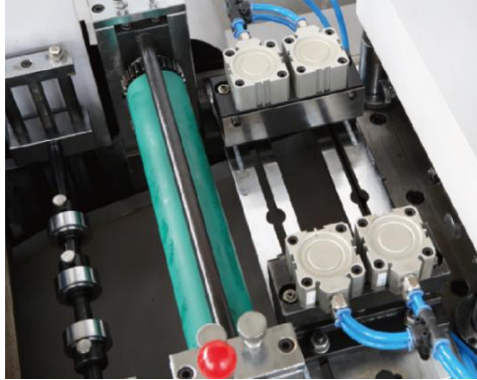
- a) Punching device;
- b) Laminating device;
- c) hot-stamping device
- d) Inline slitting system

Main Technical Specification

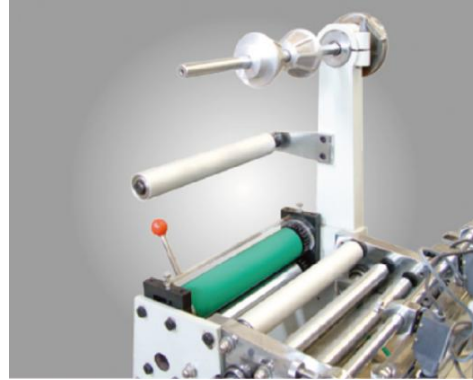
Model	320G model	420 model
cut speed	20-300 strokes/min	20-300 strokes/min
Max unwinding diameter	500mm	500mm
Max web width	320mm	420mm
Max die-cut width	300mm	400mm
Max die-cut Length	300mm	400mm
Position accuracy	±0.1mm	±0.1mm
Total power	3.5kw	4.5kw
Power voltage	220v±10%	380v
Machine weight	About 1700kg	About 2300kg
Overall dimension	2600×990×1.400mm	2950×1350×1400mm

Option photos

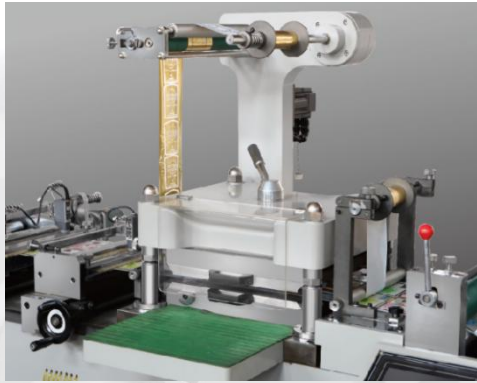
Punching device



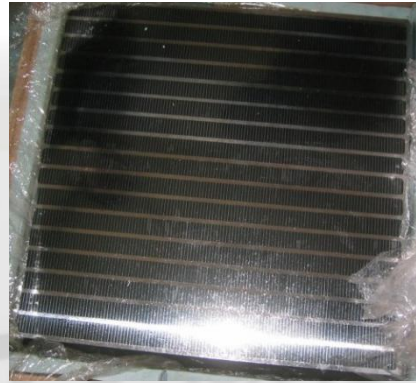
Laminating device



Hot-stamping device



Magnetic die plate



Inline slitter



High speed version for WQM320G



Workshop photos

